

M. R. ENGINEER

Plot No. 115, Mitesh Industrial Estate, Near Rly. Stn., Navghar, Vasai (E), W. Rly. Dist. Thane, Maharashtra 401 210.
Telefax: 0250-2391302 Mobile: 09833641248 e-mail: info@mrengineer.net Website: www.mrengineer.net

About us

Started in 1984, we are specialists in the manufacture of high quality die casting dies/moulds and pressure die cast components in aluminium and zinc based (viz. mazak) alloys, offering to almost every industry, good quality castings of intricate designs and complex shapes.

With a factory built-up area of 4000 sq. ft. we are equipped with state-of-the art machinery including 60 ton and 160 ton cold chamber pressure die casting machines and a comprehensive tool-room for the fabrication of dies and machining of die cast components.

We pride ourselves on high quality, excellent service and competitive price and insist that all three areas are equally important to ensure a long-term fruitful relationship with the customer.

Products

Die cast components

The perfect alloying with the latest die-casting technique gives good quality castings with superior finish even with intricate shapes with three or four cores in the die. The die cast parts can be offered either proof machined or fully machined with hydraulic testing in case pressure tight parts/castings are required. The complete die making and die maintaining facilities are also available in the factory itself.

Our products viz. molds & castings, are designed and developed in accordance with the customer's requirement and specifications. In addition, we have our own dies for the manufacture of some die-cast components. Some of the categories for which we die-cast components are mentioned below. **In addition, please see the attached page for additional products that we die-cast.**

Tools & Hardware



Electrical & Electronics



Furniture

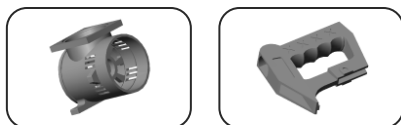


Pneumatic



Die casting dies

We have comprehensive facilities for the design, fabrication and maintenance of die casting dies. Over the years we have made more than 100 dies. Some of the highlights of our work are mentioned below. **Some of the products for which we have made dies are shown below along with the nature of die design.**

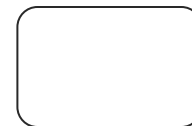


CAD modeling for product & die

- 35 years experience in manufacturing
- Ability to design and fabricate intricate pressure die casting dies with complex shapes and multiple cores
- Product and engineering advice at various stages of product development
- Casting design to minimize cost and maximize quality



Product: Hacksaw frame die
Design: 3-component die/4-side core & hydraulic core operation



Product: Pneumatic valve body die
Design: 4-core die



Product: Elevator gate lock die
Design: 3-component / 3-side core family mould



Product: Knobs die
Design: Multi cavity Modular design Die

Machined products and subassemblies

In addition to pressure die casting dies and die cast products, we have a comprehensive tool-room facility for machining of the die-cast products according to the customer's specifications and assembly of the castings into product sub-assemblies. We also have the facilities to develop jig/fixtures and carry out second operations like trimming, drilling, tapping etc.

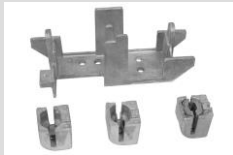
A CD showcasing our capabilities & containing technical data on die casting, workshop technology, metallurgy, electricals, materials, machine parts, hydraulics etc. is also available upon request.

Die cast components

Some of the products that we die-cast, are shown here.

Electrical & Electronics

Note: The weights given below are only indicative



Application: Electric Meter Frame
Weight: Approx. 270 gm. Alu.



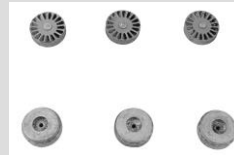
Application: ECM Gearbox Housing
Weight: Approx. 380 gm. Mazak (3pcs)



Application: CATV & Camera Parts
Weight: Approx. 22 gm. to 55 gm Alu and Mazak



Application: Heat Sink
Weight: Approx. 11 gm. Alu.



Application: Rotor
Weight: Approx. 40 gm. In 99.9% Alu.



Application: Motor Terminal Box & Cover
Weight: Approx. 250 gm. Alu.



Application: Plug Socket
Weight: Approx. 120 to 350 gm. Alu. (3Pcs) & 210 gm Mazak (3pcs)



Application: Gate Lock for Lift
Weight: Approx. 385 gm. Alu. & 210 gm Mazak



Application: Thermocouple Head
Weight: Approx. 200 gm. Alu.



Application: Limit Switch & P.B. Enclosure & Foot Switch
Weight: Approx. 120gm LS & 500gm. Enclosure Alu.

Furniture



Application: Minifix & Eccenter Wheel for Modular Furniture
Weight: Approx. 5 to 10gm. Mazak.



Application: Window Lock
Weight: Approx. 125 gm. Mazak.



Application: Z-section Window Handle
Weight: Approx. 90 gm. Alu.



Application: Window Lock
Weight: Approx. 30 gm. Mazak



Application: Safe Lock Double Bitted Key
Weight: Approx. 20 g. Mazak

Pneumatic



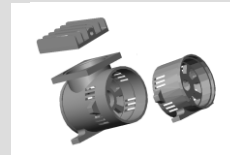
Application: Pneumatic Valve Body
Weight: Approx. 415 gm. Alu.



Application: Pneumatic Valve Body
Weight: Approx. 200 gm. Alu.



Application: Pneumatic Cylinder End Cover
Weight: Approx. 170 to 330 gm. Alu.



Application: Vacuum Pump Parts

Tools & Hardware



Application: Hacksaw Frame Parts
Weight: Approx. 350 gm. Alu.



Application: Sealant Applicator / Cauliking Gun Parts
Weight: Approx. 350 gm. Alu.



Application: Universal Bracket for Speaker and Camera
Weight: Approx. 82 gm. Mazak.

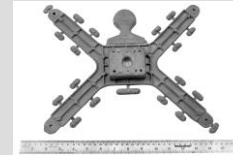


Application: Foot Switch
Weight: Approx. 300 gm. Alu. per set

Misc. Items



Application: Mixer Motor Bracket & Stirrer Part
Weight: Approx. 200 gm. Alu.



Application: Weighing Scale Base
Weight: Approx. 1.1 kg. Mazak
Size: 350mm x 290mm



Application: Bus Chair Handle & Other Parts
Weight: Approx. 680 gm Handle Alu.



Application: Lemon Squeezer
Weight: Approx. 125 gm. Alu.



Application: Knobs
Weight: Approx. 6 gm. to 50 gm Alu.

Contact us at:

M. R. ENGINEER

Plot No. 115, Mitesh Indu. Estate, Near Rly. Stn., Navghar, Vasai (E), W. Rly. Dist. Thane, Maharashtra 401 210.

Telefax: 0250-2391302 Mobile: 09833641248 e-mail: info@mrengineer.net Web: www.mrengineer.net